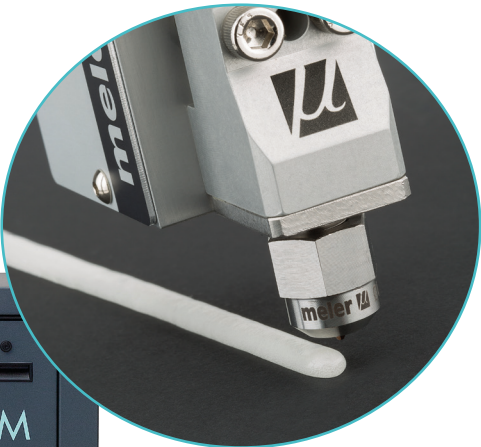


meler 



GLUING
SOLUTIONS

**MACRO
FOAM**

Melting, foaming and pumping unit for hot melt adhesives
Foam rates achievable up to 65% (depending on the adhesive)
Easy to adjust, user- friendly control parameters

FOAMING SYSTEMS

Meler has developed a new range of equipments for melting, foaming and pumping thermoplastic hot melt adhesives and PUR/ POR adhesives: the Macro Foam series.

This series is offered with three different tank sizes: 35, 50 or 120 liters. These equipments are aimed for continuous and small-intermittent applications.*

The foaming process consists on mixing the hot melt adhesive with inert gas under certain conditions of pressure and temperature. Once the mixture is applied, the gas expands creating a close- cells structure (foam).

A direct application system without recirculation is used for applying foam. This system offers a stable mixture of gas and adhesive both in percentage and in equal distribution.

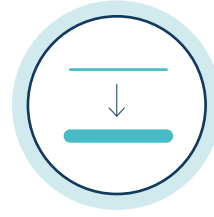
* Duration of intermittency depends on the type of adhesive. Usually up to 30 seconds.

ADVANTAGES



INCREASE OPEN TIME

More adhesives range can be used



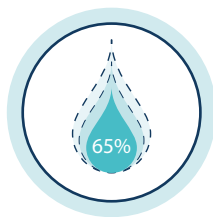
VOLUMETRIC INCREASE

After being applied, its volume increases, providing a hermetic seal in the cavities.



UNIFORMITY

Thanks to the direct system, constant gasification values are obtained allowing high application speeds.



REDUCE ADHESIVE CONSUMPTION

Up to 65%, depending on the adhesive



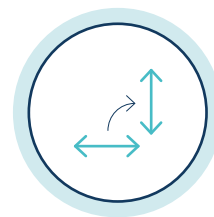
FOAM HIGHEST QUALITY

The foam generated is applied directly without recirculation, obtaining great uniformity.



FAST ADJUSTMENT

Only 3 parameters are adjusted for the operation of the equipment: Temperature, mixing pressure and gas pressure.

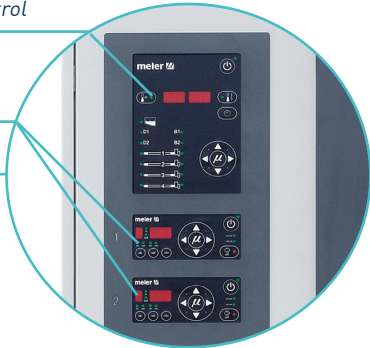


VERTICAL APPLICATION

More consistency on vertical surfaces

Temperature control

Foam pressure control



CONTROL PANEL

- > Temperature range: from 40°C to 200°C
- > Foam pressure control. Quantity applied is proportional to pressure
- > Motor ON/ OFF external contact
- > Foam pressure external control

GAS LEVEL ALARM
ADHESIVE LEVEL ALARM
TEMPERATURES OK

HEATED TANK

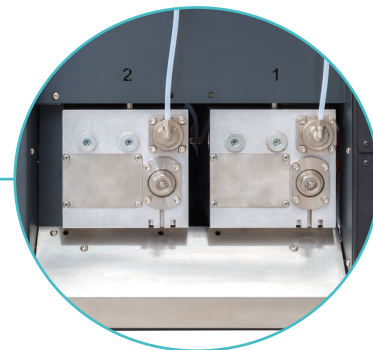
- > Capacity: 35/ 50/ 120 liters
- > PUR version with air- proof tank lid (50 liters)
- > Melting rate: a tank per hour (*)

() depending on the adhesive*



GAS PRESSURE

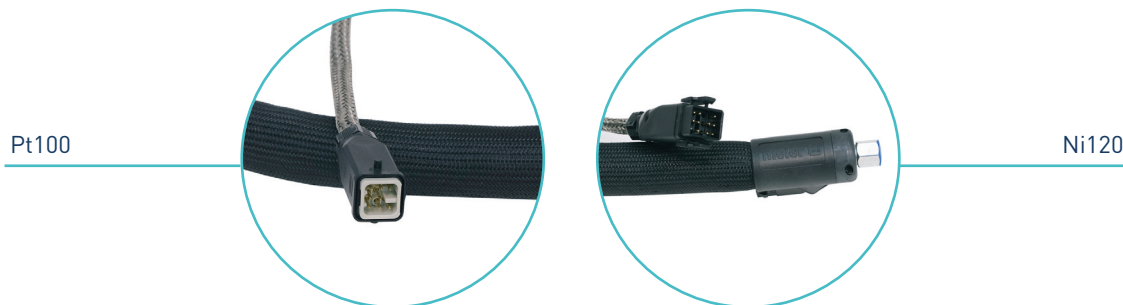
BYPASS PRESSURE



Easy access to the motor-pump assembly by means of a movable electrical cabinet

TECHNICAL FEATURES

Tank capacity	35, 50 and 120 liters (PUR version with air-proof tank lid for 50)
Rate volume including air	1.6, 3.3, 6.6 cc/rev
Melting rate	one tank volume per hour (*)
Number of pumps	2 (35, 50); 4 (120)
Number of hydraulic connections	1 per pump
Number of electric connections	up to 4 outputs
Motor power	1.100 W
Pump speed	0-150 rpm
Temperatures range	40 to 200°C
Temperature control	RTD $\pm 0.5^{\circ}\text{C}$ ($\pm 1^{\circ}\text{F}$)
Maximum working pressure	85 bar (1.233 psi)
Pressure relief valve	pneumatic
Max. input power (at 230 VAC)	10.750 W (1 simple pump/ 2 outputs) (35) 12.780 W (1 simple pump/ 2 outputs) (50) 17.050 W (1 single pump/ 2 outputs) (120)
External functions	Temperatures ok output Low level of adhesive alarm Gas low level alarm External standby activation Outputs enabled external contact Motor ON/OFF external contact Foam pressure external control
Electrical connections	3N~ 400V 50 Hz/ 60 Hz + PE
Options	Air dryer system for PUR
Dimensions (L x W x H)	1.080 x 510 x 1.600 mm (35, 50) 1.080 x 875 x 1.600 mm (120)
* Depending on type of adhesive	



The equipments Macro Foam can be supplied with a wide range of Meler hoses and guns both Pt100 and Ni120.

For more information speak with your Focke Meler representative:

meler 

Focke Meler Gluing Solutions, S.A.

Pol. Los Agustinos, c/G, nave D-43

E-31160 Orkoien - Navarra - Spain

Phone: +34 948 351 110

Fax: +34 948 351 130

info@meler.eu - www.meler.eu

A Focke Group Company



Management System
ISO 9001:2008

www.tuv.com
ID: 9105030748

